

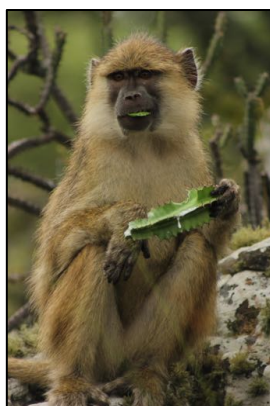
GMERC opportunities, April2021

Position Description: The Greater Mahale Ecosystem Research and Conservation (GMERC) Project is seeking a **Research Coordinator (RC)**, to be based in a remote field site in western Tanzania for 12 months. Responsibilities of the RC include (1) coordinating data collection and overseeing chimpanzee, baboon, and red-tailed monkey projects, (3) training of staff on data collection protocols, individual (NHP) identifications, and (4) supporting the project manager in some administrative tasks.



Credit: P. Gagneux

If time allows, the RC is encouraged to conduct an independent study or else lead analyses on current data that lead to manuscripts, consistent with Tanzania Wildlife Research Institute (TAWIRI) guidelines.



Credit: A. Robinson

Qualifications: A successful candidate should have a bachelor's (preferably a Masters) degree in a related field (evolutionary biology, zoology, biological anthropology), with a good command of evolutionary theory and behaviour, prior living or work experience in a developing country (preferably in Africa), be extremely fit, able to drive a manual 4x4 vehicle, familiar with Microsoft Excel and Word (ArcMap/QGIS desirable), and prior knowledge of or willingness to learn KiSwahili. Additionally, candidates must be responsible, organized, independent, resourceful, and get along well and easily with others, as the position requires long periods in the forest with a team of local and international field assistants, students, and researchers. Flexibility is critical as often scheduling, etc. change at the last minute! Knowledge of basic first aid is very useful. The landscape is demanding, and so extreme physical fitness is also critical. Previous experience with apes is desirable, but not necessary.

Duration: June 2021 - May 2022 (dates flexible given permit procedures).

Compensation: USD500 per month, with in-country & work-related expenses covered by GMERC. Candidates must be prepared to pay any travel and any government research permits (USD2200 for international applicants) up front. Travel and permit costs are reimbursed upon completion of nine months of tenure.

Please see gmerc.org for more on the work and landscape and research.

Interested applicants should create a **SINGLE PDF** file that includes a cover letter, updated CV, and the names of two references, emailed to sokwemtugmerc.org. The deadline is rolling; we will begin reviewing applications immediately and consider applicants until the position is filled.